



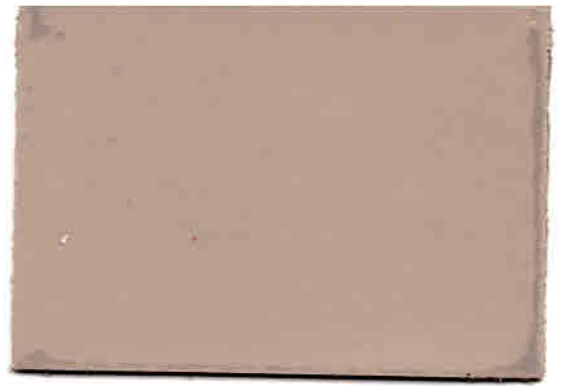
VERNICE



BIANCO



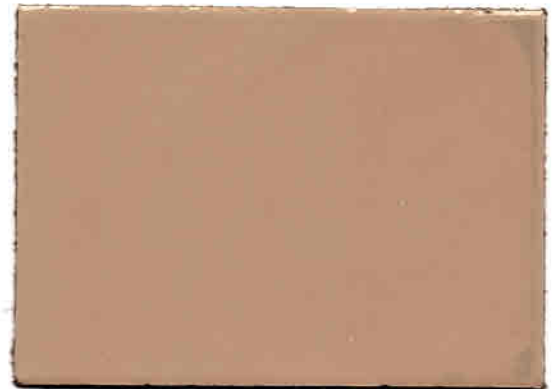
IVORY



BEIGE

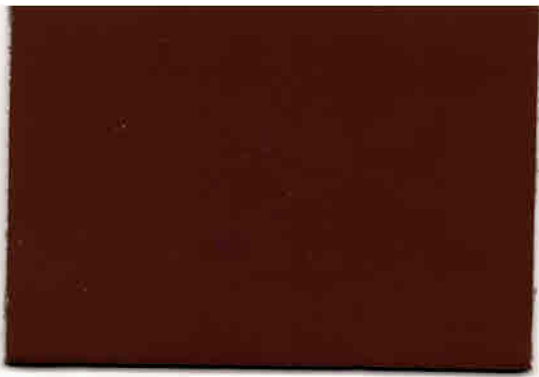


NARCISUS



TAUPE

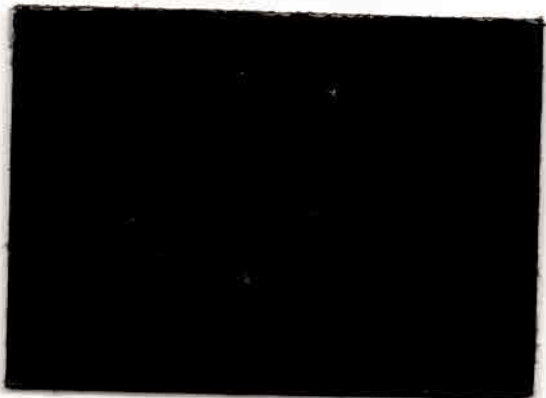




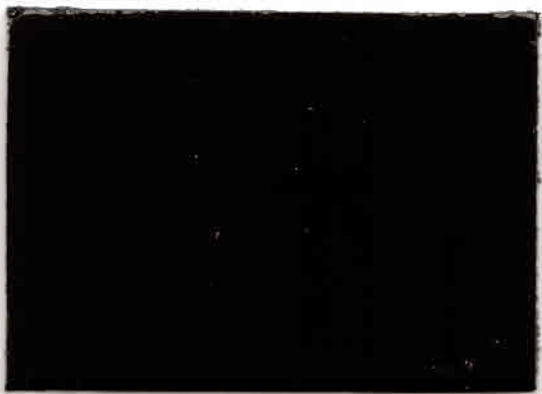
COGNAC



BRIOCHE



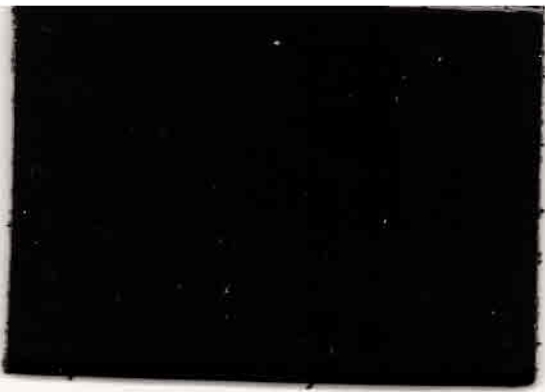
TESTA DI MORO



GRIGIO



NERO



JEANS



TURCHERE



BWE



ENAMEL PINK



ROUGE 2



GIAVO FONDO



GRASS

SCHEMA TECNICA

TECHNICAL FEATURES

INDICATIVE TECHNICAL FEATURES ON
STANDARD SAMPLES:

Leather Characteristic:	Test* results	
(Test method)	*Tests effected by SSIP - Naple (Italy)	
1) Tear strength (ISO 3377-2)	(N)	123
2) Cracking and burst test (UNI ISO 3379)		
Cracking load of grain	(KG)	21
Cracking distension of grain	(MM)	10,4 ¹
Burst load of grain	(KG)	58
Burst distension of grain	(MM)	16,80
3) Flexing resistance (UNI EN ISO 5402)		
after 50000 dry cycles	No damages	
after 10000 wet cycles	No damages	
4) Colour fastness to-and-fro rubbing (UNI EN ISO 11640)		
after 100 dry cycles grain side	(SP ²) 4	(SF ²) 4
after 20 wet cycles grain side	(SP ²) 5-4	(SF ²) 4
5) Finish adhesion (UNI EN ISO 11644)		
Dry detachment load	(N/cm)	9,81
Wet detachment load	(N/cm)	3,9
6) Colour fastness to water spotting (UNI EN ISO 15700)		
Residual halo	(grade)	3
Absorbion time	(min)	>30'
7) Colour fastness to artificial light (ISO 105-B02)		
blu scale	(grade)	7 (72h ⁴)
grey scale	(grade)	4 (72h ⁴)

¹Microcracks already present.
²Evaluation effected on the specimen
³Evaluation effected on the felt pad
⁴Exposition time



CREATIVE LEATHERS s.r.l.
 Via Della Concia, 43
 36071 Arzignano (Vi)
 Tel. 0444.453082 - 0444.478492
 Fax 0444.457631